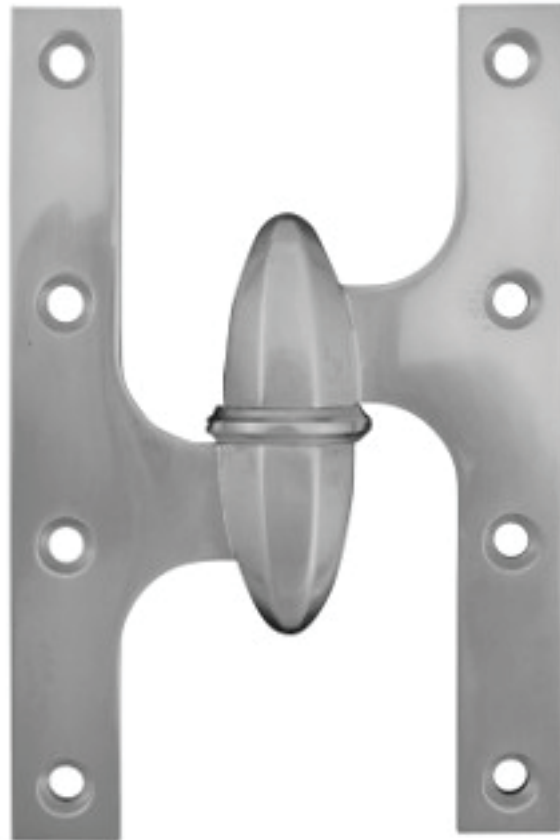


Hinges are Handed and Priced as Eaches

20-5032	5.0" x 3.2" Moorestown Olive Knuckle Hinge
20-6038	6.0" x 3.8" Moorestown Olive Knuckle Hinge

Moorestown Olive Knuckle - Ball Bearing - Standard Weight - Solid Forged Brass



Part Number	Length of Joint	Width Open	Guage of Metal	Screw Size	Screws Hinge	Packing per Box	Weight per Box	Knuckle Size
20-5032	5.0"	3.250"	0.169"	12 x 1.25"	8	2 pcs	1.6 lbs	2.60"H x 0.93"D
20-6038	6.0"	3.875"	0.203"	12 x 1.25"	8	2 pcs	2.0 lbs	2.60"H x 0.93"D

- Solid Forged Brass
- **Olive Knuckle Hinges are priced and sold as eaches.**
- Equipped with one precision machined, anti-friction bearing assembly per hinge.
- Ball bearings are machined from 300 series Stainless Steel and employ Stainless Steel balls.
- All pins are precision machined from 300 series Stainless Steel.
- **All Olive Knuckle Hinges are handed.** Be sure to specify hand of hinge when ordering.
- Custom open widths available upon request.