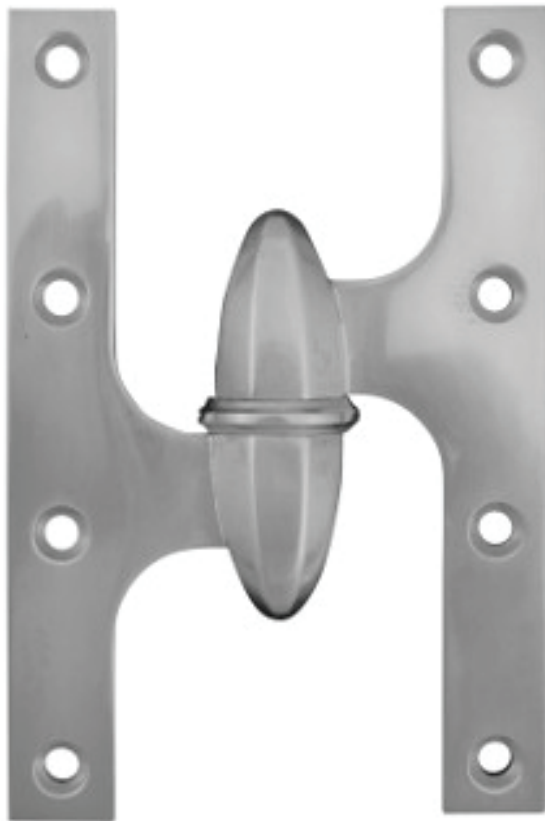


## Moorestown Olive Knuckle - Ball Bearing - Heavy Weight Hinges

*Hinges are Handed and Priced as Eaches*

20-6040	6.0" x 4.0" Moorestown Olive Knuckle Hinge
20-6045	6.0" x 4.5" Moorestown Olive Knuckle Hinge
20-6050	6.0" x 5.0" Moorestown Olive Knuckle Hinge



20-6040  
20-6045  
20-6050

Part Number	Length of Joint	Width Open	Gauge of Metal	Screw Size	Screws Hinge	Packing per Box	Weight per Box	Knuckle Size
20-6040	6.0"	4.0"	0.255"	12 x 1.25"	8	2 pcs	1.2 lbs	2.60"H x 0.93"D
20-6045	6.0"	4.5"	0.255"	12 x 1.25"	8	2 pcs	1.3 lbs	2.60"H x 0.93"D
20-6050	6.0"	5.0"	0.255"	12 x 1.25"	8	2 pcs	1.4 lbs	2.60"H x 0.93"D

- Solid Brass
- **Olive Knuckle Hinges are priced and sold as eaches.**
- Equipped with one precision machined, anti-friction bearing assembly per hinge.
- Ball bearings are machined from 300 series Stainless Steel and employ Stainless Steel balls.
- All pins are precision machined from 300 series Stainless Steel.
- **All Olive Knuckle Hinges are handed.** Be sure to specify hand of hinge when ordering.
- Custom open widths available upon request.