

NEW PRODUCTS





Moorestown Olive Knuckle - Ball Bearing - Standard Weight Hinges

<i>Hinges are Handed and Priced as Eaches</i>		Standard	Distressed	ETERNA
20-5032	5.0" x 3.2" Olive Knuckle Hinge	226.80	275.19	294.84
20-6038	6.0" x 3.8" Olive Knuckle Hinge	241.93	296.35	317.53

Moorestown Olive Knuckle - Ball Bearing - Standard Weight Hinges

Hinge Body: Hinge body is manufactured of solid forged brass.

Ball Bearings: Each hinge is equipped with one precision machined anti-friction ball bearing assembly. The two races are machined from 300 series Stainless Steel. The balls are Stainless Steel as well. The bearing shell is machined from brass of the same alloy as the hinge body to ensure an accurate color match. The construction results in an extremely durable, long life ball bearing which is able to withstand years of hard use and corrosive environments. This bearing greatly increases both the lateral and vertical load bearing capability of the hinge and therefore increases hinge life.

Finish: Hinges are individually hand polished assuring an even finish with no unpolished areas. Von Morris Olive Knuckle hinges are available in over 30 standard finishes. Custom finishing is available. Please refer to the Price List.

Pins: Pins are machined from 300 Stainless Steel for high durability and resistance to rust. They are permanently installed in one half of the hinge. The exposed end is rounded to facilitate re-assembly.

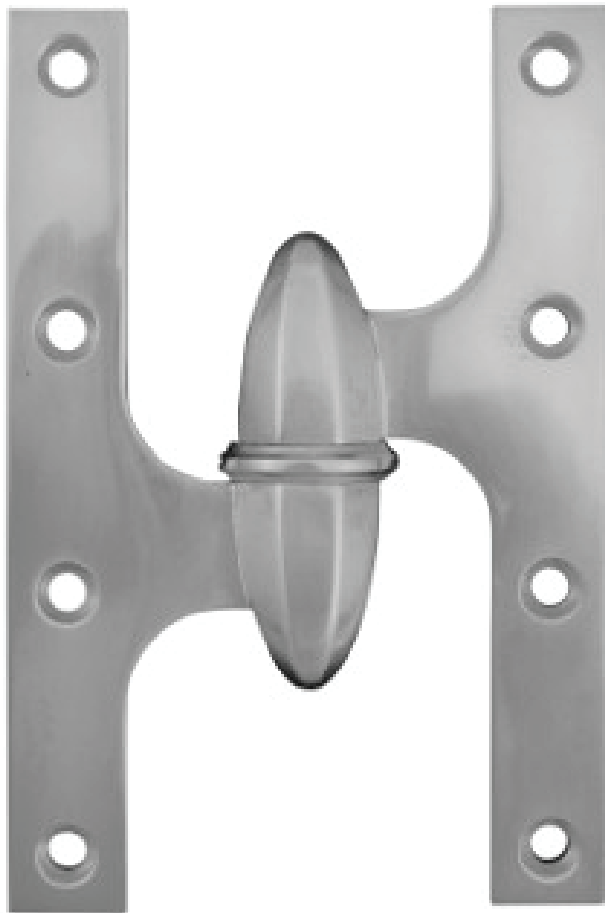
Fasteners: All hinges are provided with type "A" tapping screws. These are solid brass, flat head, counter sunk, undercut phillips head screws. Screws are bagged eight per bag.

Number of Hinges: For doors up to 89 inches, use three hinges. For each additional 30 inches or fraction thereof, use one additional hinge.

Packing: Two hinges per box with screws. Each hinge is poly bagged to prevent scratching. Hinges are packed 15 boxes per master carton.

Handing and Specifying : These hinges are handed. Please be sure to specify hand of hinges when ordering. Olive Knuckle Hinges are priced and sold as eaches.

Moorestown Olive Knuckle - Ball Bearing - Standard Weight - Solid Forged Brass



20-5032
20-6038

Part Number	Length of Joint	Width Open	Gauge of Metal	Screw Size	Screws Hinge	Packing per Box	Weight per Box	Knuckle Size
20-5032	5.0"	3.250"	0.169"	12 x 1.25"	8	2 pcs	1.6 lbs	2.60"H x 0.93"D
20-6038	6.0"	3.875"	0.203"	12 x 1.25"	8	2 pcs	2.0 lbs	2.60"H x 0.93"D

- Solid Forged Brass
- **Olive Knuckle Hinges are priced and sold as eaches.**
- Equipped with one precision machined, anti-friction bearing assembly per hinge.
- Ball bearings are machined from 300 series Stainless Steel and employ Stainless Steel balls.
- All pins are precision machined from 300 series Stainless Steel.
- **All Olive Knuckle Hinges are handed.** Be sure to specify hand of hinge when ordering.
- Custom open widths available upon request.
- Minimum door thickness 2.25".
- Installation: Centered on edge of door; knuckle 1/4" off face of door.



Moorestown Olive Knuckle - Ball Bearing - Heavy Weight Hinges

<i>Hinges are Handed and Priced as Eaches</i>		Standard	Distressed	ETERNA
20-6040	6.0" x 4.0" Olive Knuckle Hinge	272.16	338.69	355.33
20-6045	6.0" x 4.5" Olive Knuckle Hinge	287.28	359.86	378.00
20-6050	6.0" x 5.0" Olive Knuckle Hinge	302.40	381.03	400.68

Moorestown Olive Knuckle - Ball Bearing - Heavy Weight Hinges

Hinge Body: Hinge body is manufactured of solid brass.

Ball Bearings: Each hinge is equipped with one precision machined anti-friction ball bearing assembly. The two races are machined from 300 series Stainless Steel. The balls are Stainless Steel as well. The bearing shell is machined from brass of the same alloy as the hinge body to ensure an accurate color match. The construction results in an extremely durable, long life ball bearing which is able to withstand years of hard use and corrosive environments. This bearing greatly increases both the lateral and vertical load bearing capability of the hinge and therefore increases hinge life.

Finish: Hinges are individually hand polished assuring an even finish with no unpolished areas. Von Morris Olive Knuckle hinges are available in over 30 standard finishes. Custom finishing is available. Please refer to the Price List.

Pins: Pins are machined from 300 Stainless Steel for high durability and resistance to rust. They are permanently installed in one half of the hinge. The exposed end is rounded to facilitate re-assembly.

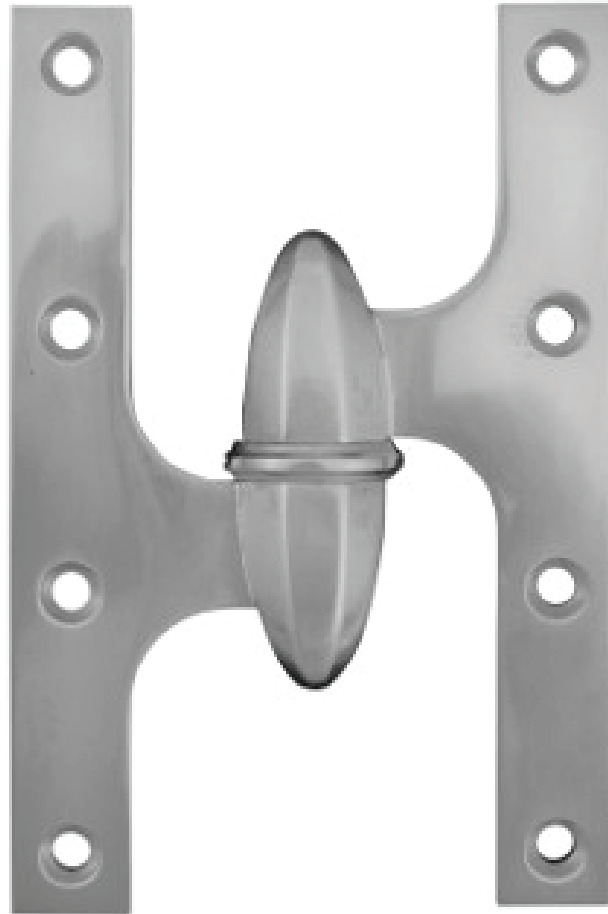
Fasteners: All hinges are provided with type "A" tapping screws. These are solid brass, flat head, counter sunk, undercut phillips head screws. Screws are bagged eight per bag.

Number of Hinges: For doors up to 89 inches, use three hinges. For each additional 30 inches or fraction thereof, use one additional hinge.

Packing: Two hinges per box with screws. Each hinge is poly bagged to prevent scratching. Hinges are packed 15 boxes per master carton.

Handing and Specifying: These hinges are handed. Please be sure to specify hand of hinges when ordering. Olive Knuckle Hinges are priced and sold as eaches.

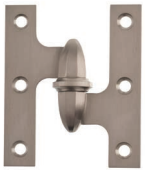
Moorestown Olive Knuckle - Ball Bearing - Heavy Weight - Solid Brass



20-6040
20-6045
20-6050

Part Number	Length of Joint	Width Open	Guage of Metal	Screw Size	Screws Hinge	Packing per Box	Weight per Box	Knuckle Size
20-6040	6.0"	4.0"	0.255"	12 x 1.25"	8	2 pcs	1.2 lbs	2.60"H x 0.93"D
20-6045	6.0"	4.5"	0.255"	12 x 1.25"	8	2 pcs	1.3 lbs	2.60"H x 0.93"D
20-6050	6.0"	5.0"	0.255"	12 x 1.25"	8	2 pcs	1.4 lbs	2.60"H x 0.93"D

- Solid Brass
- **Olive Knuckle Hinges are priced and sold as eaches.**
- Equipped with one precision machined, anti-friction bearing assembly per hinge.
- Ball bearings are machined from 300 series Stainless Steel and employ Stainless Steel balls.
- All pins are precision machined from 300 series Stainless Steel.
- **All Olive Knuckle Hinges are handed.** Be sure to specify hand of hinge when ordering.
- Custom open widths available upon request.
- Minimum door thickness 2.25".
- Installation: Centered on edge of door; knuckle 1/4" off face of door.



Moorestown - Olive Knuckle - Cabinet Hinge

<i>Hinges are Handed and Priced as Eaches</i>		Standard	Distressed	ETERNA
20-2015	2.0" x 1.5" Olive Knuckle Cabinet Hinge	77.00	92.40	106.40
20-2520	2.5" x 2.0" Olive Knuckle Cabinet Hinge	92.40	115.50	124.60
20-3025	3.0" x 2.5" Olive Knuckle Cabinet Hinge	138.60	184.84	196.00

Solid Forged Brass - Olive Knuckle - Cabinet Hinge

Hinge Body: Hinge body is manufactured of solid brass.

Ball Bearings: Hinges so equipped have one precision machined anti-friction ball bearing assembly. The two races are machined from 300 series Stainless Steel. The balls are Stainless Steel as well. The bearing shell is machined from brass of the same alloy as the hinge body to ensure an accurate color match. The construction results in an extremely durable, long life ball bearing which is able to withstand years of hard use and corrosive environments. These bearings greatly increase both the lateral and vertical load bearing capability of the hinge and therefore increase hinge life.

Finish: Hinges are individually hand polished assuring an even finish with no unpolished areas. Von Morris Olive Knuckle hinges are available in over 30 standard finishes. Custom finishing is available upon request.

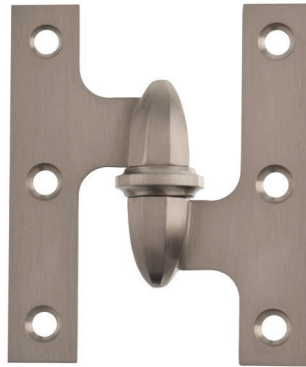
Pins: Pins are machined from 300 Stainless Steel for high durability and resistance to rust. They are permanently installed in one half of the hinge. The exposed end is rounded to facilitate re-assembly.

Fasteners: All hinges are provided with type "A" tapping screws. These are solid brass, flat head, counter sunk, undercut phillips head screws. All screws are lacquered to prevent tarnishing. Screws are bagged six per bag.

Packing: Five hinges per box with screws. Each hinge is poly bagged to prevent scratching.

Handing and Specifying: These hinges are handed. Please be sure to specify hand of hinges when ordering. Olive Knuckle Hinges are priced and sold as eaches.

Moorestown Olive Knuckle - Ball Bearing Solid Forged Brass - Cabinet Hinge



20-2015
20-2520
20-3025

Part Number	Length of Joint	Width Open	Gauge of Metal	Screw Size	Screws Hinge	Packing per Box	Weight per Box	Knuckle Size
20-2015	2.0"	1.5"	0.093"	6 x 0.75"	6	5 pcs	0.48 lbs	1.12"H x 0.39"D
20-2520	2.5"	2.0"	0.093"	6 x 0.75"	6	5 pcs	0.78 lbs	1.49"H x 0.50"D
20-3025	3.0"	2.5"	0.093"	8 x 0.75"	6	5 pcs	1.00 lbs	1.62"H x 0.50"D

- **Olive Knuckle Hinges are priced and sold as eaches.**
- Hinges Number 20-2015 and 20-2520 are equipped with one brass bushing each.
- Hinge 20-3025 is equipped with one precision machined ball bearing assembly.
- Ball bearings are machined from 300 series Stainless Steel and employ Stainless Steel balls.
- All pins are machined from 300 series Stainless Steel.
- **All Olive Knuckle Hinges are handed.** Be sure to specify hand of hinge when ordering.

Moorestown Locking Privacy Cremone Bolt

Features:

Von Morris Moorestown Cremone Bolts feature a solid brass case CNC milled from brass billet and guides with an internal mechanism of brass and stainless steel. The Locking Cremone case is very narrow, less than 1.5", for use on narrow stiles of French doors and windows. Cremone Bolt locks from the exterior with a rim cylinder and inside with a turnpiece. Cremone case contains a cassette mechanism that can be handed simply by reversing the cassette. The Cremone can also be easily changed from lever operation (90° rotation) to knob operation (180°) simply by relocating the spindle. Shoot Bolts are attached to the Cremone mechanism with machine screws. Cremone Bolt design is very clean, featuring concealed Shoot Bolt guides. **Price Includes Moorestown Turnpiece and Cylinder Collar along with either a pair of Small Moorestown Levers or Knobs, and a small Moorestown Rose for the exterior**

Guides::

End Guides have a flat spring operating on the front of the bolt to prevent rattling. The length of the Guide and placement of the spring conceals any scratches on the bolt caused by the spring. This End Guide design allows the bolts to be installed on the door and then cut to length at the job site.

Locking Cremone Case Size:

Length of Cassette:	10.5"
Width:	1.5"
Height to edge of case:	0.787"
Height to face of knob/lever boss:	1.024"
Spindle hub to turnpiece spacing:	2.250"
Spindle hub to cylinder spacing:	2.467"

Spindle Height: Standard Spindle height is 42".

Standard Lengths: 7', 8' and 10'. Other sizes by special order.
Bolts can be cut to size at job site.

Hub Rotation: Knob - 180° rotation. Lever - 90° rotation.

Throw: Knob Operation – 1.00" Lever Operation – 0.75"

Spindle: Cremones are supplied with a special spindle for double sided operation

Bolts:
Bottom bolt: 0.625" wide x 40.01"
Top bolt: 0.625" wide x 40.03" for a 7.0' Door
Top bolt: 0.625" wide x 52.92" for a 8.0' Door
Top bolt: 0.625" wide x 76.92" for a 10.0' Door

Strikes: Cremone Bolts are supplied with Mortise and Universal strikes. Angle strikes and Box strikes are available at an additional cost.



Moorestown Privacy/Locking Cremone Bolt

<i>Includes Moorestown Suited Trim</i>		Standard	Distressed	ETERNA
BOL135-84	Moorestown Privacy Cremone Bolt for 7'0 Door	2,508.10	2,730.50	3,033.90
BOL135-96	Moorestown Privacy Cremone Bolt for 8'0 Door	2,772.84	3,016.26	3,351.41
BOL135-120	Moorestown Privacy Cremone Bolt for 10'0 Door	3,302.04	3,587.80	4,012.40

All Prices in US Dollars - Prices Subject to Change Without Notice
Please Check with Customer Service for Up to Date Pricing.

Moorestown Dummy Privacy Cremone Bolt

<i>Includes Moorestown Suited Trim</i>		Standard	Distressed	ETERNA
BOL147-84	Moorestown Dummy Privacy Cremone for 7'0 Door	1,279.80	1,396.20	1,550.00
BOL147-96	Moorestown Dummy Privacy Cremone for 8'0 Door	1,609.60	1,753.40	1,946.76
BOL147-120	Dummy Privacy Cremone for 10'0 Door	2,271.00	2,467.82	2,740.42

Supplied Standard



2100-US
Universal Strike



9941-045
Double Sided
Special Spindle



9150
Rim Cylinder

Optional Accessories



2100-AS
Angle Strike



ACC171
Moorestown Box Strike

Cremone Bolt Accessories

		Standard	Distressed	ETERNA
2100-AS	Optional Angle Strike	20.56	22.15	23.72
ACC171	Moorestown Box Strike	66.00	73.00	82.00
9150	Rim Cylinder	58.80	63.50	70.56
		Mill Finish		
9931-020	Single Sided 2.0" Spindle	28.00		
9941-045	Double Sided 4.5" Spindle	72.80		
2700-06A	Double Sided 6.0" Spindle for Thick Doors 3" Max Thickness	72.80		

Moorestown Standard/Passage Cremone Bolt



Features:

Von Morris Moorestown Cremone Bolts feature a solid brass case CNC milled from brass billet and guides with an internal mechanism of brass and stainless steel. The Standard Cremone case is very narrow, less than 1.5", for use on narrow stiles of French doors and windows. Cremone case contains a cassette mechanism that can be handed simply by reversing the cassette. The Cremone can also be easily changed from lever operation (90° rotation) to knob operation (180°) simply by relocating the spindle. Shoot Bolts are attached to the Cremone mechanism with machine screws. **Price Includes a half pair of Small Moorestown Levers or Knobs.**

Guides:

End Guides have a flat spring operating on the front of the bolt to prevent rattling. The length of the Guide and placement of the spring conceals any scratches on the bolt caused by the spring. This End Guide design allows the bolts to be installed on the door and then cut to length at the job site.

Standard Cremone Case Size:

Length of Cassette:	10.5"
Width:	1.5"
Height to edge of case:	0.787"
Height to face of knob/lever boss:	1.024"

Spindle Height: Standard Spindle height is 42".

Standard Lengths: 7', 8' and 10'. Other sizes by special order.
Bolts can be cut to size at job site.

Hub Rotation: Knob - 180° rotation. Lever - 90° rotation.

Throw: Knob Operation – 1.00" Lever Operation – 0.75"

Spindle: Cremones are supplied with a special spindle for double sided operation

Bolts:
Bottom bolt: 0.625" wide x 40.01"
Top bolt: 0.625" wide x 40.03" for a 7.0' Door
Top bolt: 0.625" wide x 52.92" for a 8.0' Door
Top bolt: 0.625" wide x 76.92" for a 10.0' Door

Strikes: Cremone Bolts are supplied with Mortise and Universal strikes. Angle strikes and Box strikes are available at an additional cost.



Moorestown Standard/Passage Cremone Bolt

	<i>Includes Moorestown Suited Trim</i>	Standard	Distressed	ETERNA
BOL136-84	Moorestown Standard Cremone Bolt for 7'0 Door	1,069.90	1,169.93	1,298.31
BOL136-96	Moorestown Standard Cremone Bolt for 8'0 Door	1,334.50	1,455.70	1,615.50
BOL136-120	Moorestown Standard Cremone Bolt for 10'0 Door	1,863.65	2,027.25	2,250.00

All Prices in US Dollars - Prices Subject to Change Without Notice
Please Check with Customer Service for Up to Date Pricing.

Supplied Standard



2100-US
Universal Strike



9931-020
Single Spindle

Optional Accessories



2100-AS
Angle Strike



ACC171
Moorestown Box Strike

Cremone Bolt Accessories

		Standard	Distressed	ETERNA
2100-AS	Optional Angle Strike	20.56	22.15	23.72
ACC171	Moorestown Box Strike	66.00	73.00	82.00

		Mill Finish
9931-020	Single Sided 2.0" Spindle	28.00
9941-045	Double Sided 4.5" Spindle	72.80
2700-06A	Double Sided 6.0" Spindle for Thick Doors 3" Max Thickness	72.80



Weave Privacy/Locking Cremone Bolt

<i>Includes Weave Suited Trim</i>		Standard	Distressed	ETERNA
BOL119-84	Privacy Cremone Bolt for 7'0 Door	2,696.34	2,940.04	3,254.79
BOL119-96	Privacy Cremone Bolt for 8'0 Door	2,972.10	3,237.60	3,585.84
BOL119-120	Privacy Cremone Bolt for 10'0 Door	3,523.36	3,832.95	4,247.29

All Prices in US Dollars - Prices Subject to Change Without Notice
Please Check with Customer Service for Up to Date Pricing.

Weave Dummy Privacy Cremone Bolt

<i>Includes Weave Suited Trim</i>		Standard	Distressed	ETERNA
BOL121-84	Dummy Privacy Cremone Bolt for 7'0 Door	1,334.98	1,464.30	1,629.22
BOL121-96	Dummy Privacy Cremone Bolt for 8'0 Door	1,679.49	1,836.62	2,042.66
BOL121-120	Dummy Privacy Cremone Bolt for 10'0 Door	2,368.60	2,580.59	2,869.40

Supplied Standard



2100-US
Universal Strike



9941-045
Double Sided
Special Spindle



9150
Rim Cylinder

Optional Accessories



2100-AS
Angle Strike



ACC170
Weave Box Strike

Cremone Bolt Accessories

		Standard	Distressed	ETERNA
2100-AS	Optional Angle Strike	20.56	22.15	23.72
ACC170	Weave Box Strike	70.56	76.20	84.67
9150	Rim Cylinder		63.50	70.56
		Mill Finish		
9931-020	Single Sided 2.0" Spindle	28.00		
9941-045	Double Sided 4.5" Spindle	72.80		
2700-06A	Double Sided 6.0" Spindle for Thick Doors 3" Max Thickness	72.80		

Weave Locking Privacy Cremone Bolt



Features:

Von Morris Weave Cremone Bolts feature a solid brass case CNC milled from brass billet and guides with an internal mechanism of brass and stainless steel. The Locking Cremone case is very narrow, less than 1.5", for use on narrow stiles of French doors and windows. Cremone Bolt locks from the exterior with a rim cylinder and inside with a turnpiece. Cremone case contains a cassette mechanism that can be handed simply by reversing the cassette. The Cremone can also be easily changed from lever operation (90° rotation) to knob operation (180°) simply by relocating the spindle. Shoot Bolts are attached to the Cremone mechanism with machine screws. **Price Includes Weave Turnpiece and Cylinder Collar along with either a pair or Weave Levers or Knobs, and a small Weave Rose for the exterior**

Guides:

End Guides have a flat spring operating on the front of the bolt to prevent rattling. The length of the Guide and placement of the spring conceals any scratches on the bolt caused by the spring. This End Guide design allows the bolts to be installed on the door and then cut to length at the job site.

Locking Cremone Case Size:

Length:	10.5"
Width:	1.5"
Height to edge of case:	0.787"
Height to face of knob/lever boss:	1.024"
Spindle hub to turnpiece spacing:	2.250"
Spindle hub to cylinder spacing:	2.467"

Spindle Height: Standard Spindle height is 42".

Standard Lengths: 7', 8' and 10'. Other sizes by special order.
Bolts can be cut to size at job site.

Hub Rotation: Knob - 180° rotation. Lever - 90° rotation.

Throw: Knob Operation – 1.00" Lever Operation – 0.75"

Spindle: Cremones are supplied with a special spindle for double sided operation

Bolts:
Bottom bolt: 0.625" wide x 40.01"
Top bolt: 0.625" wide x 40.03" for a 7.0' Door
Top bolt: 0.625" wide x 52.92" for a 8.0' Door
Top bolt: 0.625" wide x 76.92" for a 10.0' Door

Strikes: Cremone Bolts are supplied with Mortise and Universal strikes. Angle strikes and Box strikes are available at an additional cost.



Weave Standard/Passage Cremone Bolt

	<i>Includes Weave Suited Trim</i>	Standard	Distressed	ETERNA
BOL120-84	Weave Standard/Passage Cremone Bolt for 7'0 Door	1,075.82	1,166.83	1,299.20
BOL120-96	Weave Standard/Passage Cremone Bolt for 8'0 Door	1,351.50	1,476.32	1,640.09
BOL120-120	Weave Standard/Passage Cremone Bolt for 10'0 Door	1,902.68	2,071.67	2,301.63

All Prices in US Dollars - Prices Subject to Change Without Notice
Please Check with Customer Service for Up to Date Pricing.

Supplied Standard



2100-US
Universal Strike



9931-020
Single Spindle

Optional Accessories



2100-AS
Angle Strike



ACC170
Weave Box Strike

Cremone Bolt Accessories

		Standard	Distressed	ETERNA
2100-AS	Optional Angle Strike	20.56	22.15	23.72
ACC170	Weave Box Strike	70.56	76.20	84.67

		Mill Finish
9931-020	Single Sided 2.0" Spindle	28.00
9941-045	Double Sided 4.5" Spindle	72.80
2700-06A	Double Sided 6.0" Spindle for Thick Doors 3" Max Thickness	72.80

Weave Standard/Passage Cremone Bolt



Features:

Von Morris Weave Cremone Bolts feature a solid brass case CNC milled from brass billet and guides with an internal mechanism of brass and stainless steel. The Standard Cremone case is very narrow, less than 1.5", for use on narrow stiles of French doors and windows. Cremone case contains a cassette mechanism that can be handed simply by reversing the cassette. The Cremone can also be easily changed from lever operation (90° rotation) to knob operation (180°) simply by relocating the spindle. Shoot Bolts are attached to the Cremone mechanism with machine screws. **Price Includes a half pair of Weave Levers or Knobs.**

Guides:

End Guides have a flat spring operating on the front of the bolt to prevent rattling. The length of the Guide and placement of the spring conceals any scratches on the bolt caused by the spring. This End Guide design allows the bolts to be installed on the door and then cut to length at the job site.

Standard/Passage Cremone Case Size:

Length:	7.75"
Width:	1.5"
Height to edge of case:	0.787"
Height to face of knob/lever boss:	1.024"

Spindle Height: Standard Spindle height is 42".

Standard Lengths: 7', 8' and 10'. Other sizes by special order.
Bolts can be cut to size at job site.

Hub Rotation: Knob - 180° rotation. Lever - 90° rotation.

Throw: Knob Operation – 1.00" Lever Operation – 0.75"

Spindle: Cremones are supplied with a special spindle for double sided operation

Bolts:
Bottom bolt: 0.625" wide x 40.01"
Top bolt: 0.625" wide x 40.03" for a 7.0' Door
Top bolt: 0.625" wide x 52.92" for a 8.0' Door
Top bolt: 0.625" wide x 76.92" for a 10.0' Door

Strikes: Cremone Bolts are supplied with Mortise and Universal strikes. Angle strikes and Box strikes are available at an additional cost.